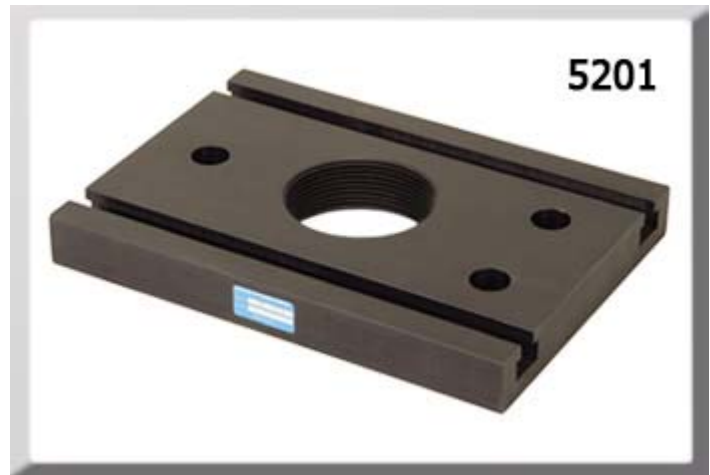




5201 T-Slotted Base Plate

Assemble your own alignment telescope base

The **5201** T-slotted base plate provides the basic building block for an alignment telescope base. This base plate has two parallel T-slots which provide mounting channels for our 5192 adjustable cone assembly. The cone assemblies permit the optical axis of any alignment telescope to be precisely adjusted in a variety of ways (shift left-right or up-down, as well as pitch and yaw). The 5201 has three counterbored holes which may be used for customer-supplied mounting. The counterbored bolt hole pattern also fits the discontinued K+E style collimator test stand, model 7010. It also has a 3½"-8 threaded hole in the center for mounting directly to a stand or any accessory having a matching external thread.



Specifications

Width: 8" (20.3cm)

Length: 10" (25.4cm)

Thickness: 1¼" (32mm)

Material: Aluminum

Mounting holes (3): 9/16" (14.3mm) diameter through, counterbored 7/8" (22.2mm) diameter, 9/16" (14.3mm) deep

Finish: Black anodized

Approx. Weight: 9 lbs (4.1 kg)

May be used with...

- 5192 V-block cone assembly
- 5182 V-block cone assembly (discontinued)
- Fits onto any product having an external 3½"-8 thread.